

# SOYBEAN DEFOLIATION

## HOW TO SCOUT

- Look at several locations throughout the field, not just one area
- Estimate the overall level of insect defoliation at each location:
  - Consider the entire canopy, not just the uppermost leaves
  - Where you suspect economic injury, collect individual leaflets from the upper, middle and lower canopy and estimate defoliation of the leaflets
  - Identify responsible pests and confirm they are still present
- Consider an insecticide application if you reach threshold levels

## THRESHOLDS

<u>Growth stage</u>	<u>Description</u>	<u>Threshold</u>
V1 - R2	vegetative - bloom	30 %
R3 - R5	pod development - fill	10 %
R6	full seed	15 %

### Approximate defoliation levels:

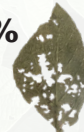
10%



15%



30%



# COMMON SOYBEAN DEFOLIATORS

**JAPANESE BEETLE**



**SILVER SPOTTED SKIPPER**



**SOYBEAN LOOPER**



**BEAN LEAF BEETLE**



**GREEN CLOVERWORM**



**GRASSHOPPER**



Written and designed by:

Amy Raudenbush, The Ohio State University  
Kelley Tilmon, The Ohio State University  
Nick Seiter, University of Illinois

Support provided by:

