

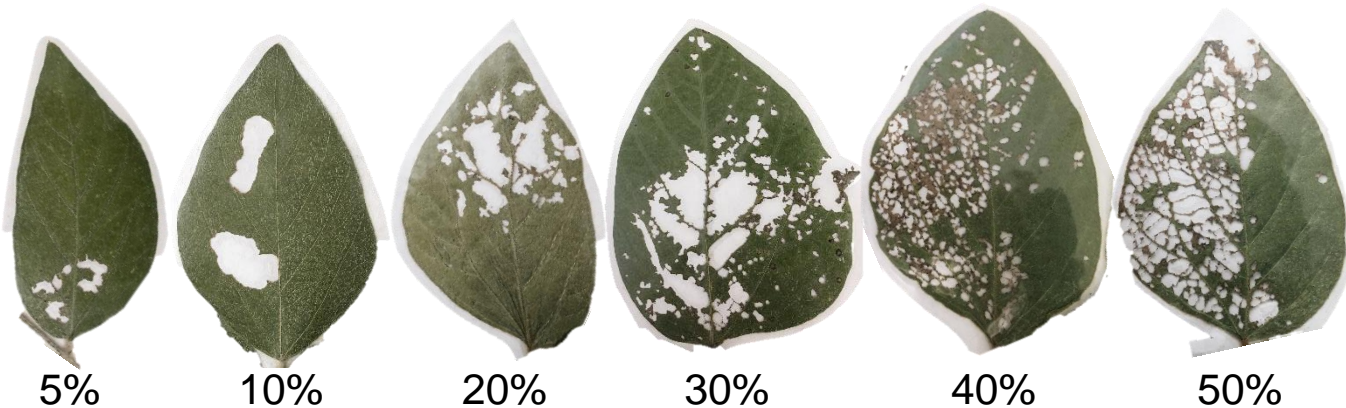
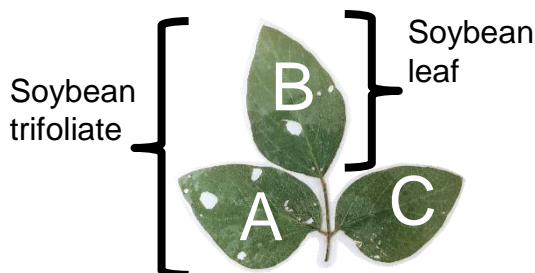


Estimating Percent Leaf Defoliation Exercise

There are many different insects that defoliate leaves of soybean in Ohio including Japanese beetle, bean leaf beetle, grasshoppers, and a number of caterpillar species. Damage patterns from defoliation may vary, but all remove leaf area. In order to determine when treatment is necessary, it is important to be able to estimate percent defoliation. Estimating percent defoliation can be difficult and it is easy to over-estimate!

Estimating percent leaf defoliation:

- 1) Each soybean trifoliolate has 3 leaves labeled A, B and C (on the back).
- 2) Identify the leaf that **has the most defoliation** for estimating percent defoliation in this exercise.
- 3) Use the guide below to determine if the area of the defoliation on the leaf is less than 5%, 10%, 20%, 30%, 40% or 50% or more.
- 4) Repeat the exercise with additional trifoliolates.



THE OHIO STATE UNIVERSITY

COLLEGE OF FOOD, AGRICULTURAL,
AND ENVIRONMENTAL SCIENCES

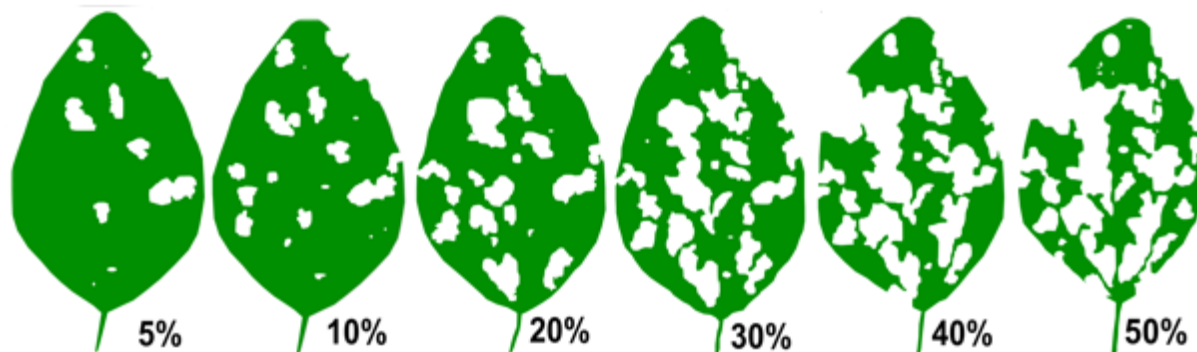
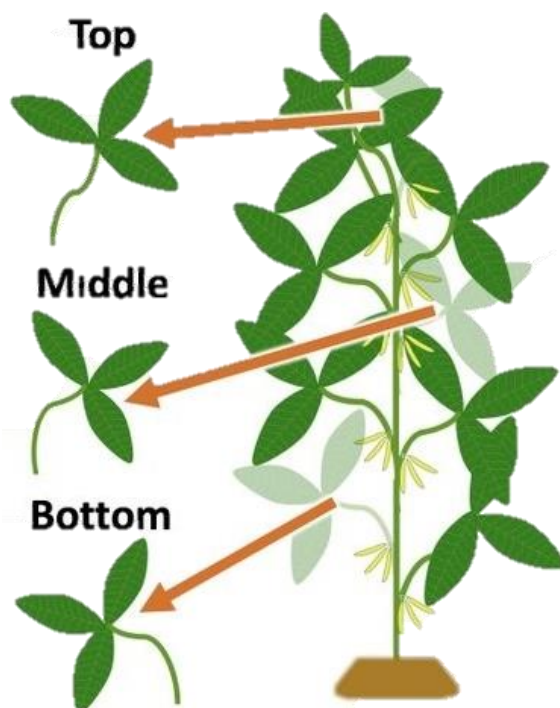
aginsects.osu.edu

The Ohio State University is an
Affirmative Action/Equal Opportunity Institution.
For more information: go.osu.edu/cfaesdiversity.



Steps to Calculate Defoliation in the Field

1. Choose 40 plants from locations throughout field (don't focus just on edge)
2. Remove a trifoliolate from the top, middle, and bottom sections of each plant
3. On each trifoliolate remove the most and least damaged leaf; keep the mama-bear leaf
4. Look at all your mama-bear leaves and estimate defoliation based on these (use guide)



THRESHOLD LEVELS

V-stage: 30%
R-stage: 20%